


Microsemi®

Description

PD70224 is a dual pack of MOSFET-based full-bridge rectifiers. It contains low- R_{DS} 0.16 Ω N-channel MOSFETs for much higher overall efficiency and higher output power, particularly when used in Powered Devices for Power over Ethernet (PoE) applications. The entire drive circuitry for driving the MOSFETs is on-chip, including a charge pump for driving the high-side N-channel MOSFETs. The total forward drop (bridge offset) introduced by the IdealBridge™ rectifier is only 192mV at 0.6A, compared to a standard bridge rectifier that typically presents 2000mV of forward drop.

PD70224 IdealBridge™ can support over 1A current, making it the ideal choice not only for modern energy-saving 2-pair applications compliant with IEEE802.3af and IEEE802.3at (Type 1 and Type 2), but also 4-pair Powered Devices such as UPOE and POH (Power over HDBase-T, 95W).

In addition, PD70224 is capable of helping to identify at the physical layer itself whether a 2-pair PSE or a 4-pair PSE is providing power over the cable. It does that by sensing the voltage on the line (un-rectified) side of the pairs.

Features

- ◆ Active circuit with low forward-drop to replace dissipative passive diode bridges
- ◆ Self-contained drive circuitry for MOSFETs
- ◆ Designed to support IEEE802.3af/at, UPOE and Power over HDBase-T (PoH)
- ◆ Integrated 0.16 Ω N-Channel MOSFETs for 0.32 Ω total path resistance
- ◆ “Power present” indicator signals for identifying 4-pair bridge power
- ◆ Low leakage, < 10 μ A during detection
- ◆ Wide operating voltage range up to 57V
- ◆ -40°C to +85°C ambient
- ◆ Available in 40 pin package
- ◆ RoHS Compliant

Applications

- Power over Ethernet (all IEEE compliant 2-pair modes)
- Proprietary 4-pair standards, UPOE (Universal PoE) and POH

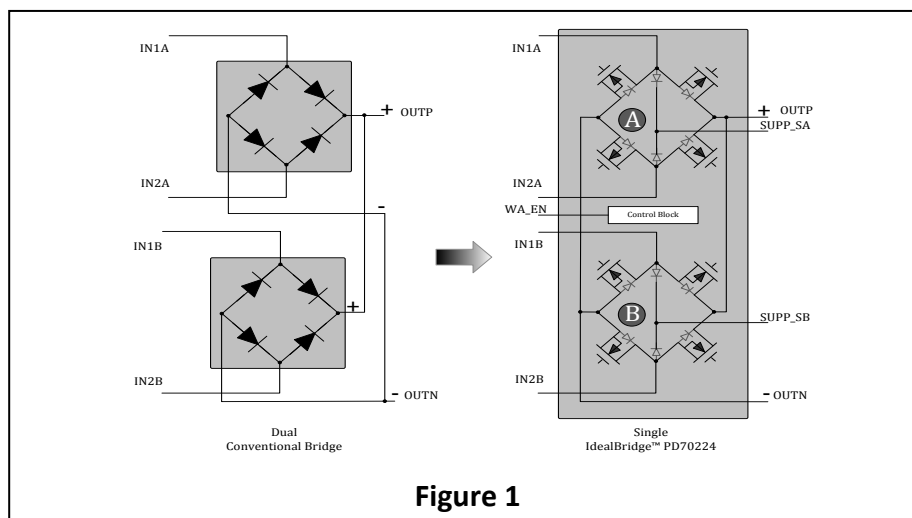


Figure 1



Microsemi®

Pin Configuration and Pinout

PD70224

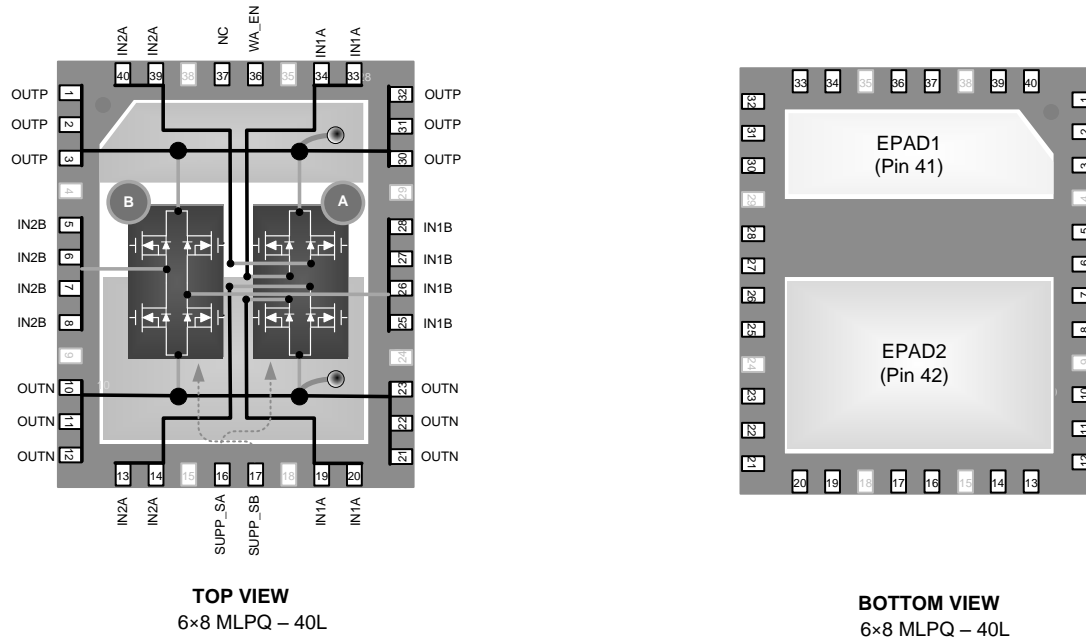


Figure 2: Internal Construction and Pinout

Ordering Information

Ambient Temperature	Type	Package	Part Number	Packaging Type	Part Marking
-40 to 85°C	RoHS compliant, Pb-free, MSL3	MLP-Quad (40 lead)	PD70224ILQ	Bulk/Tube	Microsemi Logo MSC
			PD70224ILQ-TR	Tape and Reel	PD70224 YYWWX*

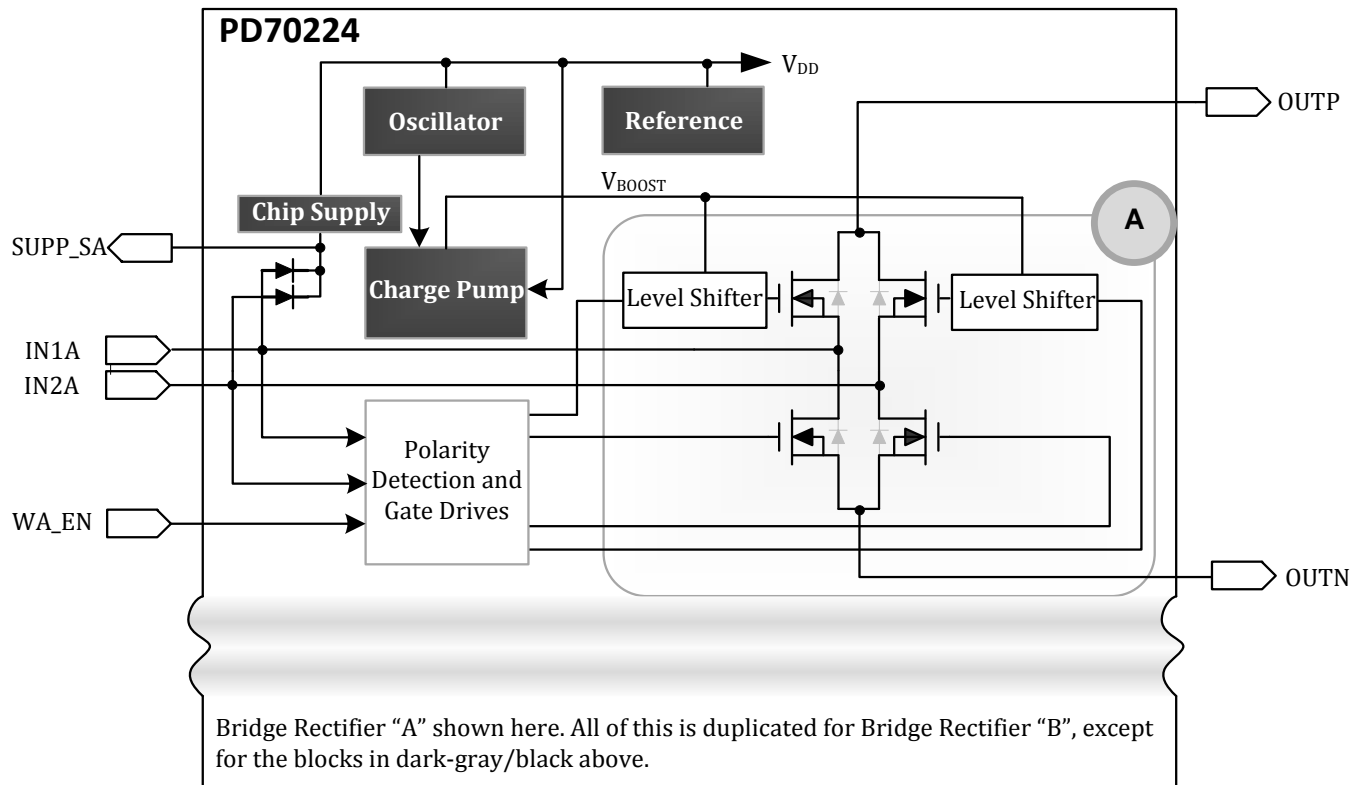
*Year / Week / Lot number


Microsemi®

Pin Number	Pin Designator	Description
PD70224 MLP-Quad 40 lead		
1, 2, 3	OUTP	Rectified positive (upper) rail shared by both bridges
4	N.A.	Not applicable (pin not present)
5, 6, 7, 8	IN2B	Input "2" of bridge rectifier number B
9	N.A.	Not applicable (pin not present)
10, 11, 12	OUTN	Rectified negative (lower) rail shared by both bridges
13, 14	IN2A	Input "2" of bridge rectifier number A. Same as Pins 39 and 40. Note: These pins are not shorted to pins 39 and 40 inside the device. The device functionality relies on a copper trace on the PCB, between pins 13, 14, 39 and 40.
15	N.A.	Not applicable (pin not present)
16	SUPP_SA	Input power supply detect pin for bride rectifier number A. Goes high when pairs connected to this bridge are powered by the PSE
	N.A.	Not applicable (pin not present)
17	SUPP_SB	Input power supply detect pin for bride rectifier number B. Goes high when pairs connected to this bridge are powered by the PSE
18	N.A.	Not applicable (pin not present)
19, 20	IN1A	Input "1" of bridge rectifier number A. Same as Pins 33 and 34. Note: These pins are not shorted to pins 33 and 34 inside the device. The device functionality relies on a copper trace on the PCB, between pins 33, 34, 19 and 20.
21, 22, 23	OUTN	Rectified negative (lower) rail shared by both bridges, same as Pins 10, 11 and 12
24	N.A.	Not applicable (pin not present)
25, 26, 27, 28	IN1B	Input "1" of bridge rectifier number B
29	N.A.	Not applicable (pin not present)
30, 31, 32	OUTP	Rectified positive (upper) rail shared by both bridges. Same as Pins 1, 2 and 3


Microsemi®

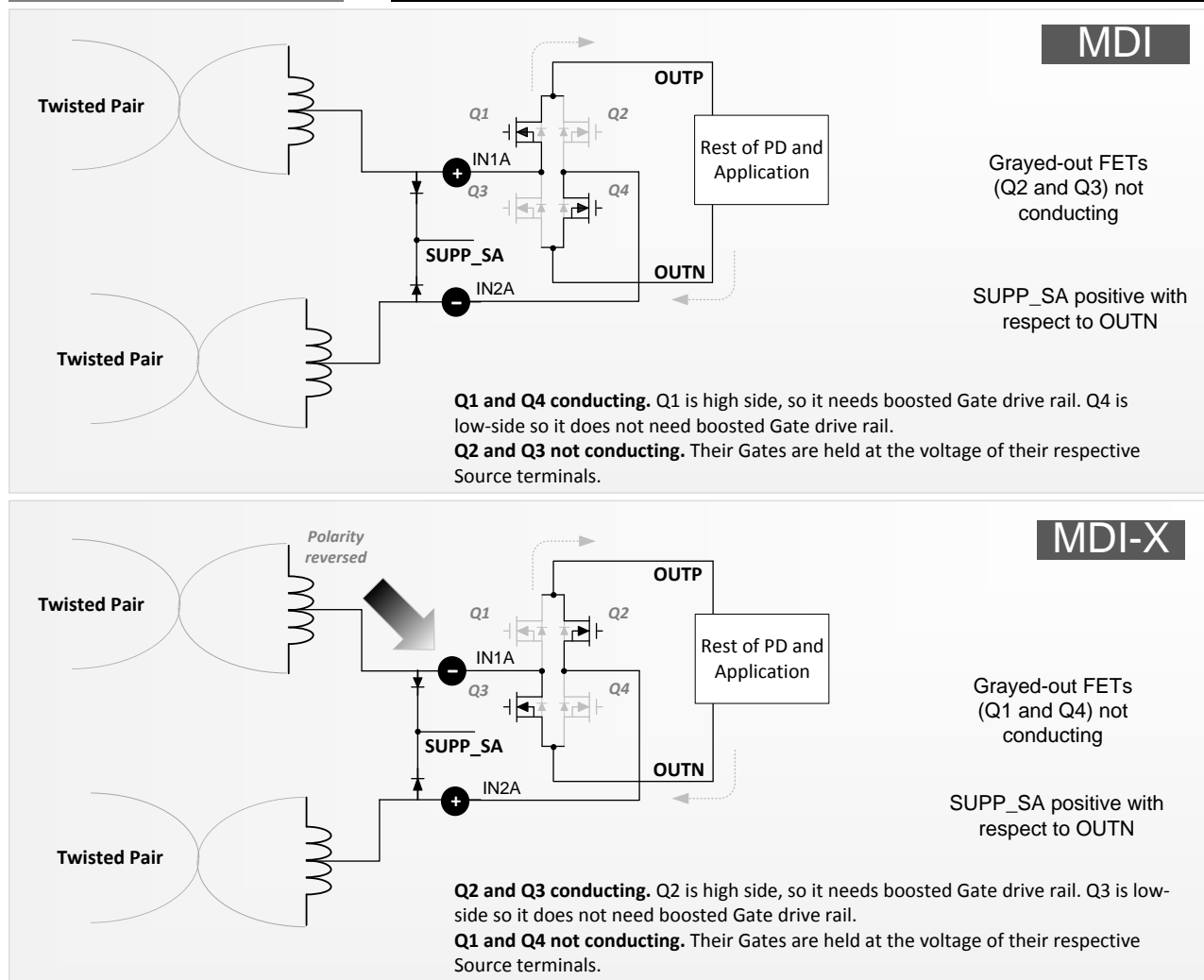
33, 34	IN1A	Input “1” of bridge rectifier number A. Same as Pins 19 and 20. Note: These pins are not shorted to pins 19 and 20 inside the device. The device functionality relies on a copper trace on the PCB, between pins 33, 34, 19 and 20.
35	N.A.	Not applicable (pin not present)
36	WA_EN	While this input is low (referenced to OUTN) the chip work according to internal flow diagram. When this input is high, it enable wall adapter feature, i.e. turn OFF internal switches and act as regular diode bridge.
	N.A.	Not applicable (pin not present)
37	N.C	Not connected; do not connect externally (leave floating)
38	N.A.	Not applicable (pin not present)
39, 40	IN2A	Input “2” of bridge rectifier number A. Same as Pins 13 and 14. Note: These pins are not shorted to pins 13 and 14 inside the device. The device functionality relies on a copper trace on the PCB, between pins 13, 14, 39 and 40.
41	EPAD1	Connect to OUTP on PCB
42	EPAD2	Connect to OUTN on PCB


Microsemi®

Figure 3: Block Diagram


Microsemi®

 Bridge Rectifier "A" (powered with
MDI or MDI-X

The MOSFETs and active bridge circuitry is guaranteed to turn ON at a threshold set between 23.1V and 32V. Below that threshold, rectifier operation is through their body diodes only


PURPOSE OF CHARGE PUMP:

Therefore, in both cases above, the FETs connected to OUTP (the "high-side" FETs) are the ones which require a boosted Gate drive rail so they can be turned ON. The on-chip charge pump provides the boosted Gate drive rail for the high-side FETs. The FETs connected to OUTN ("low-side" FETs) do not need a boosted drive rail to be turned ON.

PURPOSE AND USE OF SUPPLY PINS:

Since the above twisted pair set is delivering power, in both cases above, SUPP_SA is positive with respect to OUTN. But if these two twisted pairs were not connected to a PSE, SUPP_SA would be low. Therefore, in the case of a standard 2-pair or 4-pair PDs with two bridge rectifiers (4-pairs), one connected to the data pairs, the other to the spare pairs, the presence of high voltage on SUPP_SA and/or SUPP_SB will indicate whether the data pairs or spare pairs, or both, are connected to PSEs. So SUPP_SA and SUPP_SB can be used to indicate 2-pair or 4-pair PoE operation.

Figure 4: Principle of Operation


Microsemi®

Absolute Maximum Ratings

Performance is not necessarily guaranteed over this entire range. These are maximum stress ratings only. Exceeding these ratings, even momentarily, can cause immediate damage, or negatively impact long-term operating reliability.

	Min	Max	Units
IN1A, IN1B, IN2A, IN2B to OUTN	-0.3	74	V
IN1A to IN2A	-0.3	74	V
IN1B to IN2B	-0.3	74	V
IN1A, IN1B, IN2A, IN2B to OUTP	-74		V
IN1A, IN2A to IN1B	-0.3	74	V
IN1A, IN2A to IN2B	-0.3	74	V
OUTP to OUTN	-0.3	74	V
OUTP to IN1A, IN1B, IN2A, IN2B	-0.3	74	V
SUPP_SA, SUPP_SB to OUTN	-0.3	74	V
WA_EN to OUTN	-0.3	5.5	V
I_{INA} , I_{INB} (currents through bridge A or B)		1.5	A
Junction Temperature		150	°C
Lead Soldering Temperature (40s, reflow)		260	°C
Storage Temperature	-65	150	°C
ESD rating	HBM	±1250 *	V
	MM	±100	V
	CDM	±2000	V

(*) All pins pass 1250v, Except IN1A and IN2A that Pass 1000v

Note: EPAD1 is connected by copper plane on PCB to OUTP, and EPAD2 is similarly connected to OUTN. OUTN is ground for IC.

Operating Ratings

Performance is generally guaranteed over this range as further detailed below under Electrical Characteristics.

	Min	Max	Units
IN1A, IN1B to OUTN		57	V
IN2A, IN2B to OUTN		57	V
WA_EN to OUTN	-0.3	5	V
Junction Temperature	-40	125	°C
Port Current (I_{INx})	0	1.5	A

Note: Corresponding Ambient Temperature is -40 to 85 °C


Microsemi®

Thermal Properties

Thermal Resistance	Min	Typ	Max	Units
θ_{JA}		31		°C/W
θ_{JL}		2.5		°C/W
θ_{JC}		5		°C/W

Note: The θ_{Jx} numbers assume no forced airflow. Junction Temperature is calculated using $T_J = T_A + (P_D \times \theta_{JA})$. In particular, θ_{JA} is a function of the PCB construction. The stated number above is for a four-layer board in accordance with JESD-51 (JEDEC).

Electrical Characteristics

Unless otherwise specified under conditions, the Min and Max ratings stated below apply over the entire specified operating ratings of the device. Typ values stated are either by design or by production testing at 25°C ambient.

Symbol	Parameter	Conditions	Min	Typ	Max	Units
V_{INx}	Input Voltage for Bridge “x”, where x is “A” or “B”.				57	V
ΔI_Q	Differential Quiescent Current $I(V_{in}=10.1V) - I(V_{in}=2.5V)$;	$2.5V < V_{INx} < 10.1V$; No load between OUTP & OUTN; No load on SUPP_Sx pins.		6	10	μA
I_Q	Quiescent Current (single bridge)	$10.2V < V_{INx} < 23V$; No load between OUTP & OUTN; No load on SUPP_Sx pins.			85	μA
	Quiescent Current (both bridge combined)	$V_{INx} = 55V$; No load between OUTP & OUTN; No load on SUPP_Sx pins.			900	μA
V_{TURN_ON}	Active turn-on voltage of FETs		23.1	27.5	32	V


Microsemi®

Symbol	Parameter	Conditions	Min	Typ	Max	Units
V_{HYST}	Turn-on voltage hysteresis			0.4		V
T_{ALT}	Alternate input voltage polarity – Delay time required ($V_{in} = 0V$) while alternating input voltage polarity		200			ms
V_{OFFSET}	Bridge offset @ Off state	$V_{INx} < V_{TURN_ON}$, two body diodes in series $I_{INx} = 40mA$			1.8	V
R_{DS}	FET Drain to Source Resistance	$I_D = 0.6A$ $T_J = 25^{\circ}C$		0.16	0.26	Ω
		$I_D = 0.6A$; $-40^{\circ}C \leq T_J \leq 125^{\circ}C$			0.38	Ω
I_R	Leakage Current (Reverse)	$V_{OUTP} - V_{OUTN} = 57V$			80	μA
V_{BFD}	Backfeed Voltage	Between input terminals with 100k Ω resistor across them and 57V between OUTP and OUTN			2.7	V
I_{MAX_Off}	Maximum Forward Current (per bridge) below V_{TURN_ON}				0.45	A
I_{MAX_On}	Maximum input Current above V_{TURN_ON} . Per bridge, while only one bridge out of the two is active.				1.5	A
I_{MAX_LOAD}	Maximum Load Current above V_{TURN_ON} . Per device while two bridges are active and each bridge is supporting half load				2	A
V_{D_SUPP}	Maximum voltage drop between INx to SUPP_Sx pins	Supp_Sx Loaded with 100k Ω resistor			2	V
I_{MAX_SUPP}	Maximum current to				10	mA



Microsemi®

	consume from SUPP_Sx pins					
V_{IH}	WA_EN - Input high logic		1.35			V
V_{IL}	WA_EN - Input low logic				1.05	V

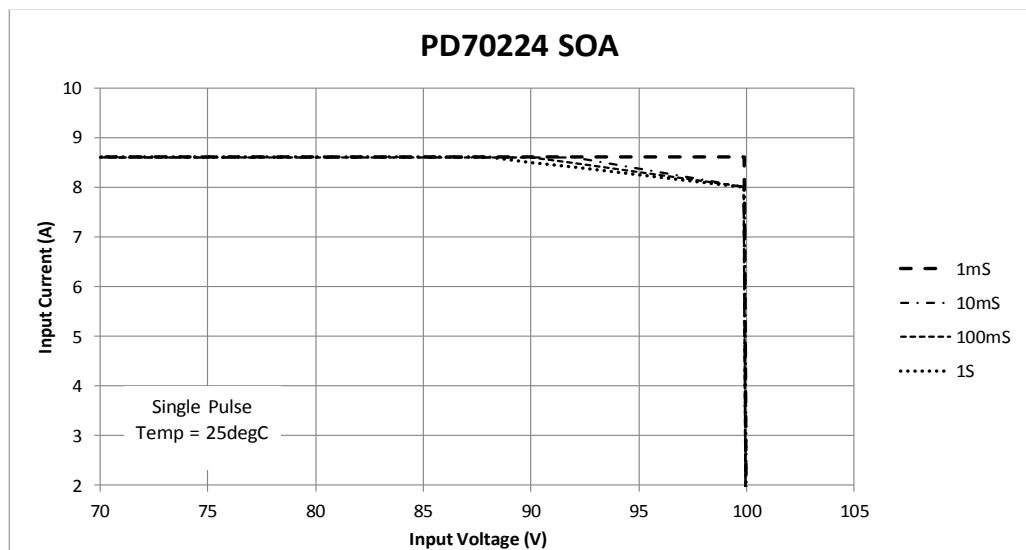


Figure 5: Safe Operating Area

PD70224 application is described in the following paragraph

PD applications utilizing PD70224 IC should use 1nF/100V ceramic capacitor at Bridge A inputs and at Bridge B inputs.

An 10K ohm resistor should be placed on SUPP SA and SUPP SB lines between PD70224 and PD70210A device.

When WA_EN function is not used connect WA_EN pin to OUTN Pin.

When WA_EN function is used connect a 10V/100nF capacitor between WA_EN pin and OUTN Pin.

The Devices are presented in Figure 6 and Figure 7.

PD applications utilizing PD70224 IC may be operated with an external power source (DC wall adaptor). There are two cases of providing power with an external source, the cases are presented in Figure 6 and Figure 7.

- 1) External source connected to application's low voltage supply rails. External source voltage level is dependent on DCDC output characteristics. This connection is not affected by the PD70224 use.
- 2) External source connected to PD device output connection toward the application (VPP to VPP_{OUT}). External source voltage level is dependent on DCDC input requirements.

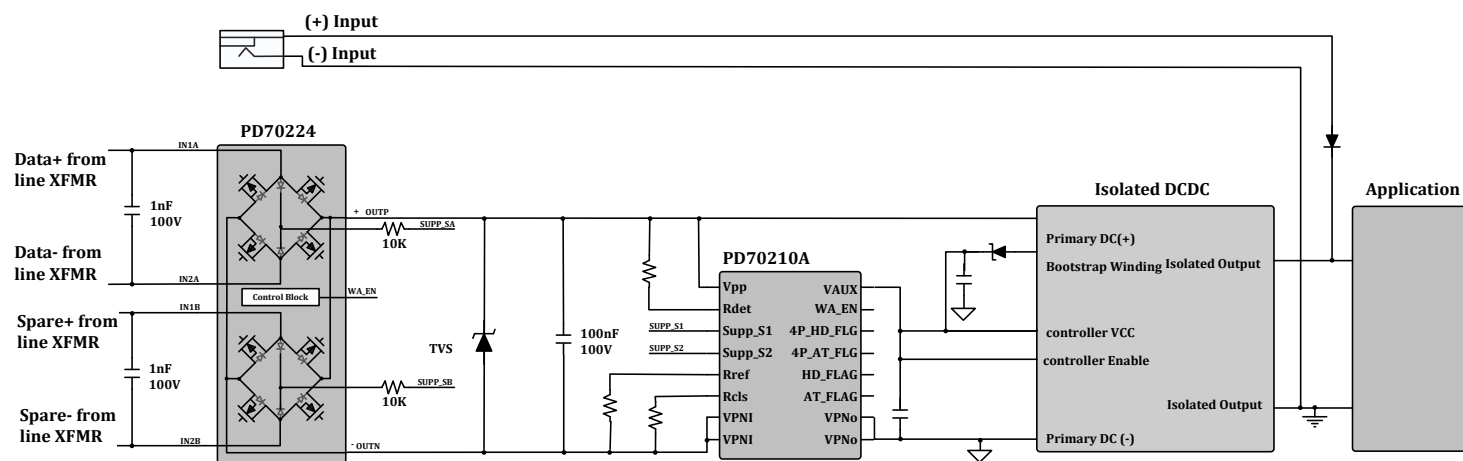


Figure 6: External Power Input connected to Application supply Rails



Microsemi®

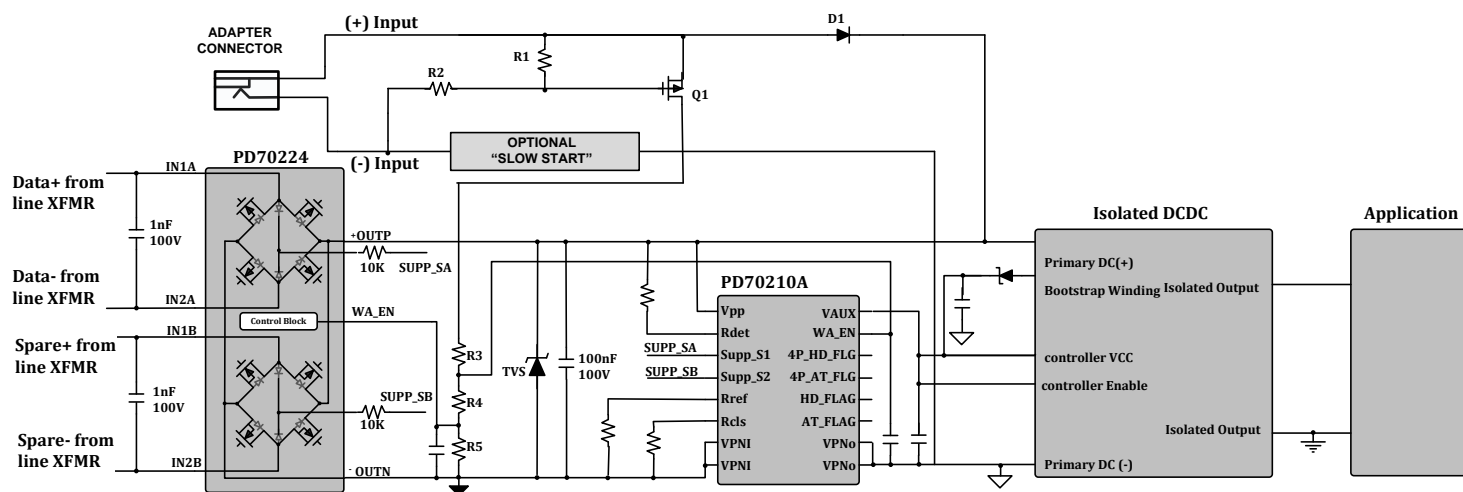


Figure 7: External Power Input connected to PD70210A Output

External source connected to PD device output (Figure 7)

PD70224 WA_EN pin will be used for protecting the PSE when an external adapter is connected.

In this mode the risk to PSE side exists, when a higher voltage external adapter is hot connected to the system.

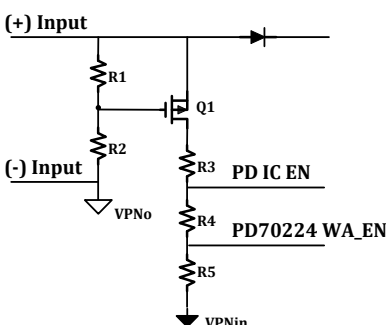
When WA_EN input voltage is higher than its threshold level, PD70224 internal FETs are disabled, converting the device into standard diode bridge.

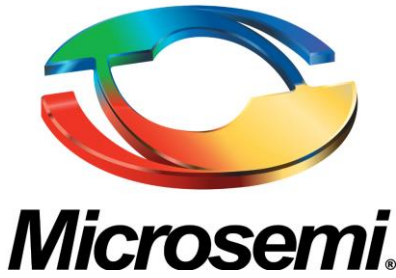
An optional “slow start” circuit prevents adapter jack contact arcing when an adapter is “hot plugged” by limiting its surge current. For the detailed circuit refer to TN_214 “Auxiliary Power for PDs”.

The PD70210A too has a specific input pin, to disable the isolation switch, when an External adapter is connected.

In this case WA_EN resistors divider depends on the “turn off” threshold of the PD70210A and of PD70224.

Figure 8 is zooming into the resistors to be selected in external adapter connection.



**Figure 8:** External Power Input resistors dividers

R1 and R2 sets a rough threshold for PFET Q1 enable, to detect whether external adapter exists or not. It should be set to be lower threshold than PD70224 and PD70210A disable levels.

R3, R4 and R5 sets PD70210A disable threshold and PD70224 disable threshold.

PD70210A disable threshold should be set so that it will always be lower than PD70224 disable threshold.

1 Volt is a good choice for the margin between the two.

So, in case of 44V-57V external adapter, the disable setting can be selected as follows:

PFET enable threshold = 35V.

PD70224 disable threshold = 43V.

R1 and R2 setting should be so that the value of Q1 VGS < 20V at max voltage condition of external adapter.

While external adapter voltage is above 35V, Q1 will be above its VGS_{th} value.

$$VGS = Vext_adapter \times \frac{R1}{R1 + R2}$$

Suppose VGS_{th} is 3.5V thus we will set VGS=5V.

R1 is selected as 2KΩ.

$$R2 = R1 \times \frac{Vext_adapter - VGS}{VGS}$$

Using R1=2KΩ, Vext_adapter=30V and VGS= maximum VGS_{th}=3.5V. we get R2 value.

$$R2 = 15K\Omega$$

$$= PD70210A_Wa_en = Vext_adapter_PD70210A \times \frac{R4}{(R3 + R4)}$$

$$R2 = R1 \times \frac{Vext_adapter - VGS}{VGS}$$


Microsemi®

$R2 = 60K\Omega$, $R3$, $R4$ and $R5$ are set using the two equations below:

$$(I) \quad PD70224_Wa_en = Vext_adapter_PD70224 \times \frac{R5}{(R3+R4+R5)}$$

$$(II) \quad PD70210A_Wa_en = Vext_adapter_PD70210A \times \frac{R4+R5}{(R3+R4+R5)}$$

Set $R3$, $R4$ and $R5$ up to few $K\Omega$.

At equation (I) set $Vext_adapter_PD70224 = 44V$ and from PD70224 data sheet $PD70224_WA_EN = 1.35V$.

At equation (II) set $Vext_adapter_PD70210A = (\text{minimum } Vext_adapter_PD70224 - 1V)$ and from PD_IC data sheet $PD70210A_WA_EN = 2.4V$.

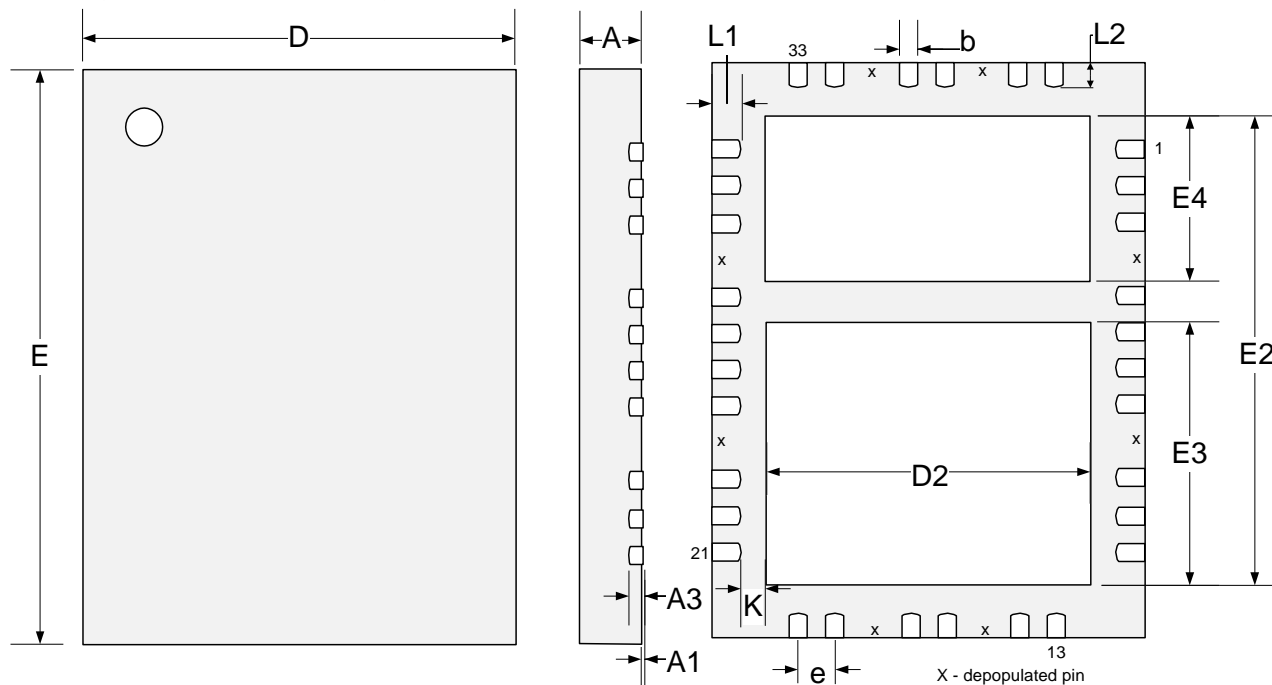
$R5$ is selected as 620Ω .

Solving the two equations plus accuracy and verifying that PD70210A is always disconnected before PD70224, we get the optimum resistors values for an adapter of 36V and above.

$$R3 = 15K\Omega$$

$$R4 = 820\Omega$$

$$R5 = 620\Omega$$


Microsemi®
Package Outline Drawing 40 Pin QFN 6x8 mm


Dim	MILLIMETERS		INCHES	
	MIN	MAX	MIN	MAX
A	0.80	1.00	0.031	0.039
A1	0.00	0.05	0	0.002
A3	0.20 REF		0.008 REF	
b	0.18	0.30	0.007	0.012
D	6.00 BSC		0.236 BSC	
E	8.00 BSC		0.315 BSC	
D2	4.25	4.5	0.167	0.177
E2	6.35	6.6	0.250	0.260
E3	3.50	3.75	0.138	0.148
E4	2.20	2.46	0.087	0.097
e	0.50 BSC		0.020 BSC	
K	0.30	-	0.012	-
L1	0.37	0.57	0.014	0.022
L2	0.30	0.50	0.012	0.020

Note:

1. Dimensions do not include protrusions; these shall not exceed 0.155mm (.006") on any side. Lead dimension shall not include solder coverage.
2. Dimensions are in millimeters, inches for reference only.



Microsemi®

PD70224 Recommended PCB layout for 40 Pin QFN 6x8 mm

Recommended PCB layout pattern for PD70224 is described in the following three figures.

Pad of pins number 4, 9, 15, 18, 24, 29, 35 and 38 are missing from the layout because it do not exist in package.

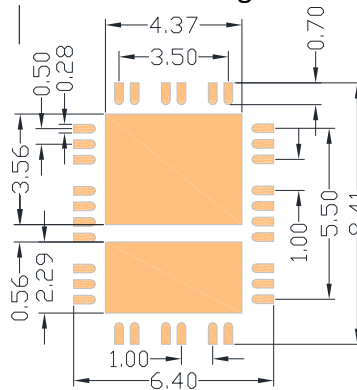


Figure 9: PD70224 Top layer Copper Recommended PCB Layout (mm)

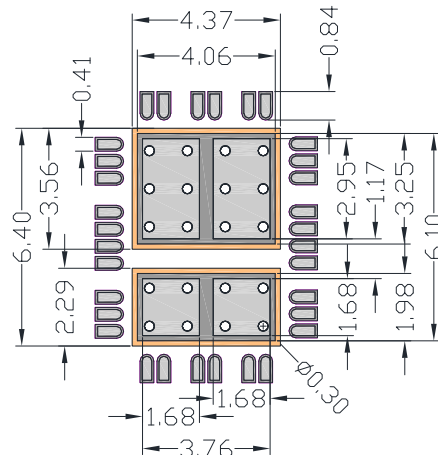


Figure 10: PD70224 Top layer Solder Mask, Solder Paste and Vias Recommended PCB Layout (mm)

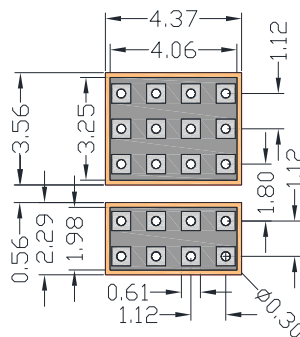


Figure 11: PD70224 Bottom layer Copper and Solder Paste Recommended PCB Layout for Thermal Pad Array (mm)

**Microsemi®**

Design example

Next four figures illustrates the layout of PD70224 EVB evaluation board for reference.

The board is two layers PCB.

U2 is PD70224.

This board can be ordered from Microsemi.

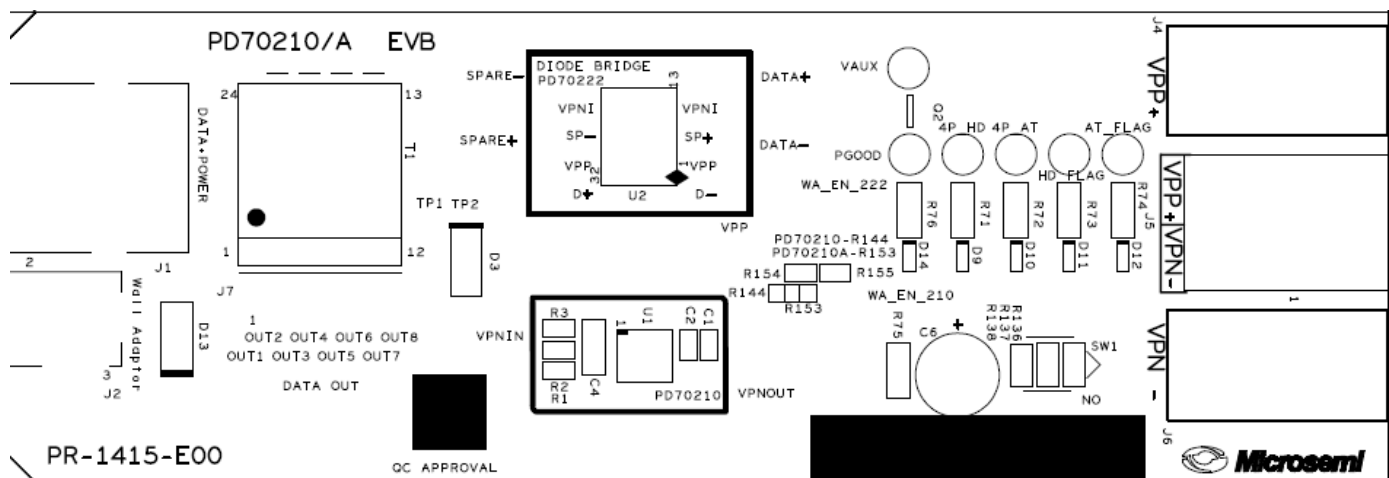


Figure 12: PD70224 EVB PCB Silk Top

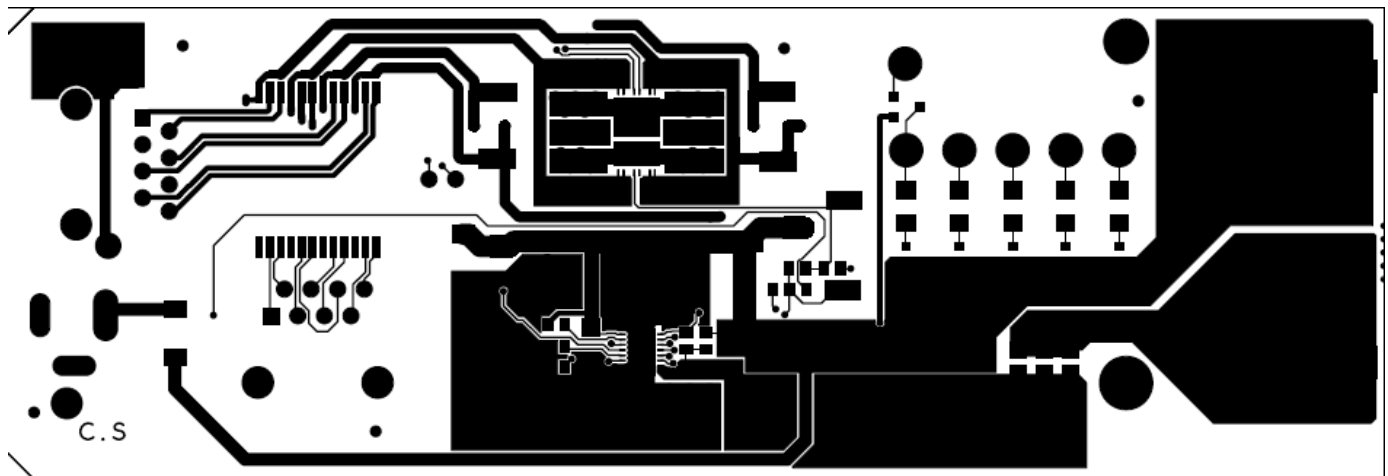


Figure 13: PD70224 EVB PCB Top Copper



IdealBridge™ Dual MOSFET-based Bridge Rectifier


Microsemi®

The information contained in the document (unless it is publicly available on the Web without access restrictions) is PROPRIETARY AND CONFIDENTIAL information of Microsemi and cannot be copied, published, uploaded, posted, transmitted, distributed or disclosed or used without the express duly signed written consent of Microsemi. If the recipient of this document has entered into a disclosure agreement with Microsemi, then the terms of such Agreement will also apply. This document and the information contained herein may not be modified, by any person other than authorized personnel of Microsemi. No license under any patent, copyright, trade secret or other intellectual property right is granted to or conferred upon you by disclosure or delivery of the information, either expressly, by implication, inducement, estoppels or otherwise. Any license under such intellectual property rights must be approved by Microsemi in writing signed by an officer of Microsemi.

Microsemi reserves the right to change the configuration, functionality and performance of its products at anytime without any notice. This product has been subject to limited testing and should not be used in conjunction with life-support or other mission-critical equipment or applications. Microsemi assumes no liability whatsoever, and Microsemi disclaims any express or implied warranty, relating to sale and/or use of Microsemi products including liability or warranties relating to fitness for a particular purpose, merchantability, or infringement of any patent, copyright or other intellectual property right. Any performance specifications believed to be reliable but are not verified and customer or user must conduct and complete all performance and other testing of this product as well as any user or customers final application. User or customer shall not rely on any data and performance specifications or parameters provided by Microsemi. It is the customer's and user's responsibility to independently determine suitability of any Microsemi product and to test and verify the same. The information contained herein is provided "AS IS, WHERE IS" and with all faults, and the entire risk associated with such information is entirely with the User. Microsemi specifically disclaims any liability of any kind including for consequential, incidental and punitive damages as well as lost profit. The product is subject to other terms and conditions which can be located on the web at <http://www.microsemi.com/company/terms-and-conditions>.

Revision History

Revision Level / Date	Para. Affected	Description
0.7 / 14 May 2014		Initial Release – Preliminary version
0.72 / 22 May 2014		Add dimensions to recommended layout add IMAX_LOAD
0.73 / 23 June 2014		Update leadframe for thermal pad
1.0 / 20 Aug 2014		Update maximum SUPP_Sx current, application information, adding SOA graph. Update MSL level.
1.1 / 29 October 2014		Updating ESD
1.2 / 25 November 2014		Remove Watermark, Updating ESD with IN1A / IN2A 1000v note
1.3 / 16 May 2016		Updated Fig.7 with optional "slow start" circuit

© 2014 Microsemi Corp.

All rights reserved.

For support PoEsupport@microsemi.com

Visit our web site at: www.microsemi.com

Catalog Number: DS_PD70224

Mouser Electronics

Authorized Distributor

Click to View Pricing, Inventory, Delivery & Lifecycle Information:

[Microsemi:](#)

[PD70224](#) [PD70224ILQ-TR](#) [PD70224LILQ-TR](#)